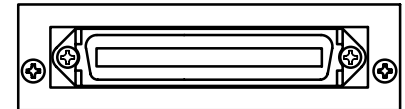
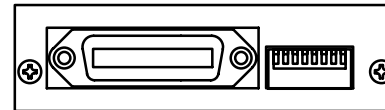


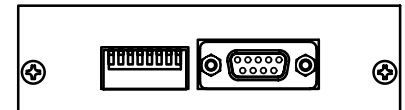
- 03, - 04 BCD出力付きの場合



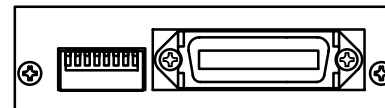
1 - 01 GPIB付きの場合



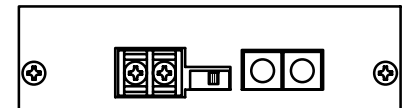
- 05 RS-232C付きの場合



- 02 プリンタインタフェース付きの場合



- 06 RS-485付きの場合



TSURUGA ELECTRIC CORPORATION. All rights reserved.

端子ねじ：M3

REVISED	DATE	Jul.12,2001	APPROVED BY	TITLE
	SCALE		CHECKED BY	
	DESIGNED BY		DRAWN BY	デジタルM テスタ
	TSURUGA ELECTRIC CORPORATION			DRAWING No.